

# MAWA-300A

## Pulsed Micro TIG Welder

Durable and reliable – this high performance **micro TIG welding** power supply is the perfect solution for welding coils and terminals, bus bars, and covered wires. Supplying between 30 and 300 amps of output power, this unit targets small components in the automotive, medical, battery, and electronics industry.

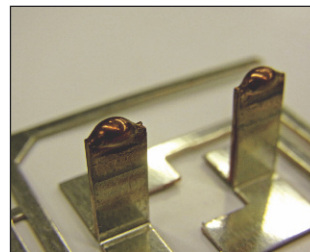
Unique **Touch Start** and **Pulsation** features offer a higher level of control as compared to competitive models, providing more consistent and reliable welds.

Amada Miyachi also supplies a full range of welding accessories for the MAWA-300A micro TIG welder, including torches, electrodes, torch stands, and safety helmets and gloves.

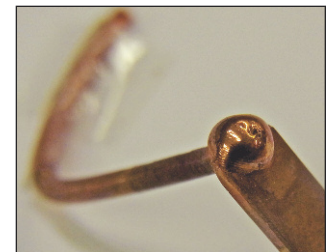
### KEY FEATURES

- Capable of welding of conductive metals
- Pulsation feature significantly reduces porosity
- Touch Start feature controls and identifies weld location
- Monitoring function checks the upper and lower limits of the current as well as the envelope of the waveform and identifies process errors.
- Capable of welding of dissimilar materials
- Digital programming interface facilitates easy pulse form control
- Supports multiple weld schedules

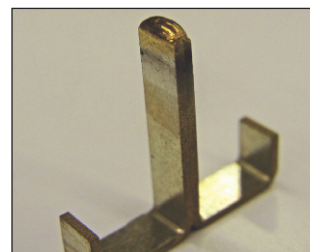
### TYPICAL APPLICATIONS



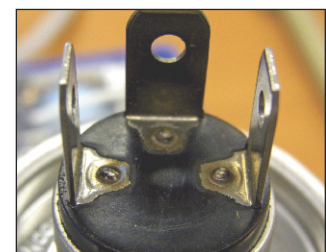
*Bus bars*



*Wire to bus bar*



*Bus bar*

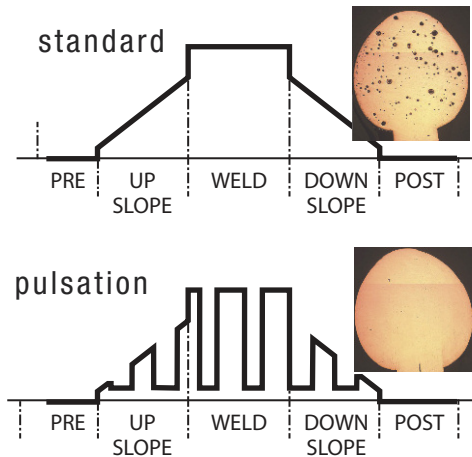


*Tab welding*

## PULSATION

**Pulsation** allows the user to selectively turn the current on and off during the weld. The frequency can be up to 5 kHz for very rapid firing. **Pulsation** results in:

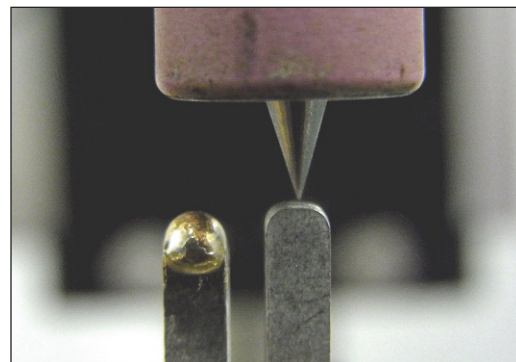
- Controlled heat input to the part
- Elimination of internal porosity and external dimples
- Uniform size and shape of welds



## TOUCH START

**Touch Start** drives the electrode to contact the workpiece and then retract at a given speed. The electrode starts firing in low current at a short distance from the part, controlling the location of the weld, and reducing the electrical noise emitted in the arc generation. Benefits of **Touch Start** include:

- Firing occurs as soon as the electrode starts to retract
- Low voltage operation – low HF noise
- Indicates and controls the location of the weld



## TECHNICAL SPECIFICATIONS

General	
Power requirements	208 VAC , 3 phase, 50/60 Hz
Power consumption	7.13 kVA (@max. duty cycle 5%)
Control mode	Constant current
Welding parameters	
Output current	30-300 A
Weld time	0.1 - 4000 ms
Pulsation frequency	1 - 5000 Hz
Maximum duty cycle	5% @ 300 A    50% @ 80 A
Gas purge time	0.0 - 9.99 sec

## WEIGHT & DIMENSIONS

Dimensions (L x W x H)	27.8 in x 8.3 in x 16 in (705 mm x 211 mm x 408 mm)
Weight	100 lbs (45 kg)



1820 S. Myrtle Ave. • Monrovia, CA 91016 US  
 T: (626) 303-5676 • F: (626) 358-8048  
 info@amadamiyachi.com • www.amadamiyachi.com  
 ISO 9001 Certified Company • 24/7 Repair Service: 1-866-751-7378

AMADA MIYACHI AMERICA, INC.

**AMERICAS**  
**Amada Miyachi**  
**America Midwest**  
 Wixom, MI 48393  
 T: (248) 313-3078  
 midwestsales@amadamiyachi.com

**Amada Miyachi do**  
**Brasil Ltda.**  
 Sao Paulo, Brasil  
 T: +55-11-4193-3607  
 antonio.ruiz@amadamiyachi.com

**EUROPE**  
**Amada Miyachi**  
**Europe GmbH**  
 Puchheim, Germany  
 T: +49 (0) 89 83 94 030  
 infode@amadamiyachi.eu

**ASIA**  
**Amada Miyachi Co., Ltd.**  
 Noda, 278-0016 Japan  
 T: +81-4-7125-6177  
 sales@miyachi.com

**Amada Miyachi**  
**Shanghai, Co., Ltd.**  
 Shanghai, China  
 T: +86-21-6448-6000  
 zqzhang@msc.miyachi.com

**Amada Miyachi**  
**Korea Co., Ltd.**  
 Gyeonggi-do, Korea  
 T: +82-31-8015-6810  
 dykim@mkc.miyachi.com

**Amada Miyachi**  
**Taiwan Co., Ltd.**  
 Taipei, Taiwan R.O.C.  
 T: 886-2-2397-4778  
 keigaku@miyachi.com

**Amada Miyachi**  
**(Thailand) Co., Ltd.**  
 Samutprakarn, Thailand  
 T: +66-2751-9337-8  
 info@mtl.miyachi.com

**Amada Miyachi**  
**Vietnam Co., Ltd.**  
 Ho Chi Minh City, Vietnam  
 T: +84-8-3771-7972

**Amada Miyachi**  
**India Pvt., Ltd.**  
 Bangalore, Karnataka  
 T: 080-4092-1749 & 3549  
 info@miyachiindia.com

**Amada Miyachi**  
**America Mexico**  
 El Paso, TX 79925  
 T: (915) 881-8765  
 mxsales@amadamiyachi.com

**MIYACHI** | **MIYACHI** | **MIYACHI**  
**UNITEK** | **PEGO** | **EAPRO**

follow us on:



Specifications subject to change without notice. Copyright© 2015 Amada Miyachi America, Inc. The material contained herein cannot be reproduced or used in any other way without the express written permission of Amada Miyachi America, Inc. All rights reserved.